



## SCS Surveillance Control Station

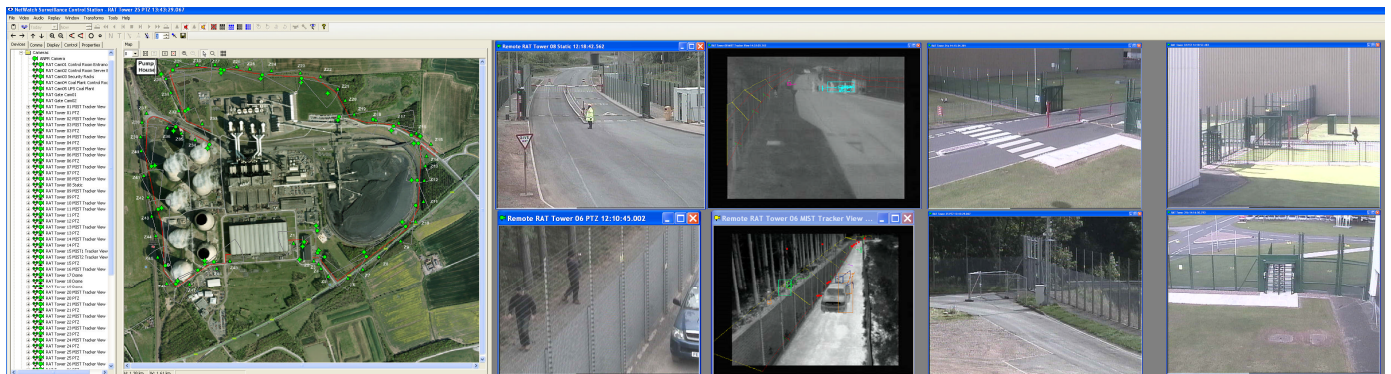
The Surveillance Control Station provides the human interface with networked recorders, servers and encoders; these include the Camera Interface Recorders, Network Video Recorder, Video Wall Servers and Video Analytic Encoders.

Surveillance Control Stations enable operators to control all system functions, to view all live and recorded video and handle and respond to incoming alert events. They provide the tools to extract and download video evidence in a secure and traceable format.



### SCS Primary Functions:-

- In real time
  - View all cameras
  - Communicate using full duplex audio
  - View and respond to alerts as they happen
- Review recorded
  - Video
  - Audio communication
  - Alerts
- Control what video is displayed on a Video Wall
- Control PTZ cameras
- Download recorded data for evidence capture
- Control cameras using map functions
- System configuration and maintenance



The SCS is flexible and capable of integration to third party equipment. This is an area of continual development to improve systems interoperability with third party equipment, current supported interfaces include:-

### Access Control and PIDs:

- SNMP polling and traps
- OPC alarms and events
- High impedance digital inputs

### Video:

- RTSP
- HTML

The SCS in conjunction with our mapping feature and NetWatch Camera Interface Recorders and MIST encoders, provide a real world co-ordinate system placing cameras within the map and targets in relative position within a cameras field of view. Tracking of lone guards is also available using GPS phone data and plotting the guards position onto the map.

Alert and or fault information can trigger the generation of SMS messages directly to a responders phone, dramatically reducing incident response times; alternatively these triggers can send emails if a response is not so urgent.



## SCS Continued

### Features

- Camera view selection
  - Normal
  - Motion or Tracking
  - Replay
  - Normal + transform processed
- Camera auto cycle definition tools.
- Dual viewing of camera video
  - Review of recorded video
  - Normal real time .
- Review of recorded video
  - Time synchronized set of cameras
  - Individual cameras non synchronized
- Evidence extraction traceability & authentication
  - Time synchronized across recorders
  - Download to local SCS evidence safe
  - Device GUID tree topology
  - Bitwise encoding MD5, SHA1, SHA256 and SHA512
  - Encrypted authentication certificate
- Alarm Database
  - Alarms colour coded by priority / status
  - Linkage to response procedure and action taken log
  - Alarms linked to device, time and date
- Operator activity logs – time stamped
  - Logged on / off
  - Cameras viewed / reviewed
  - Data downloads made.
- Remote recorders, servers and encoders
  - Configuration
  - Restart
  - Close down
- System tools
  - Video frame clipboard capture
  - Recorder, Server and Encoder time synchronisation
- Audio Communication
  - Full duplex point to point voice
  - Broadcast pre-recorded messages
- User privileges
  - User groups using windows security
  - View and Review
  - Configuration of SCS features; PTZ movement, tours and presets, audio, camera cycles, display arrangements
  - Recorder, Server, Encoder, configuration features; include camera naming, camera grouping etc.
  - Video data download
  - Engineering; full control

### Operator Usability

- Operate using the map tools
  - Open camera views by clicking on map icons
  - Open camera views by clicking in camera FOV depicted on the map
  - Move PTZ camera by clicking anywhere on the map (all PTZ cameras in area can move to target area)
- Operate using the navigation tools
  - Open camera views by clicking on camera icons
  - Review alarms by clicking on an alarm event (opens the cameras associated with the alarm and switches to review mode and sets the time and date to the alarm event time)
- Group cameras
  - Geographic area
  - View category
  - Site
- PTZ camera control - click on the camera view
  - Hover the pointer over the camera view, the cursor will change to a direction indicator, click and the camera will follow. Zoom in and out using the mouse wheel.
- Access to logs and alarm data
  - Click on the log icon of the recorder or encoder to open a real time window of the log.
  - Use search filters to remove unwanted information
  - Click on any alarm to view device, response procedure and action taken log
- Online review of recorded video data without interrupting the recording process.
- Improved vigilance by
  - One click feature operation
  - Task automation
  - Clear layout and responsive software